

Waterhog Classic No. 200

20

WATERHOG™ classic

> ANTI-FATIGUE & SAFETY
creating safety



Waterhog™ Classic No. 200

Meet the original **Waterhog**. Tough, long-lasting and proven for Australian conditions.

No other mat in the industry traps water and dirt so effectively. Rubber reinforced face nubs and it's "waffle" design provides a crush-proof scraping action.

The raised-rubber water-dam traps dirt and water keeping it off carpets, tiles and floors. Waterhog Classic is ideal for most applications inside or out. The unique design and style makes it revolutionary!

Waterhog Classic is anti-static, maximum average voltage of 1.6KV. Safe for use in computer rooms and around electronic equipment.

Specifications

Uses: Entrance areas

Compound: Yarn: Solution-dyed polypropylene,
Backing: SBR Rubber

Durometer: 55 per ASTM D2240

Thickness: 10mm

Edges: Safety bevelled on all four sides

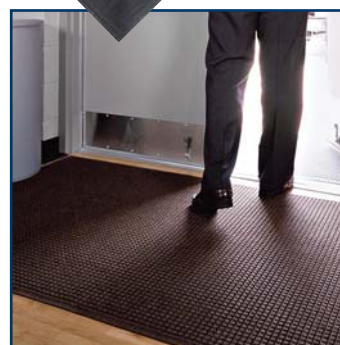
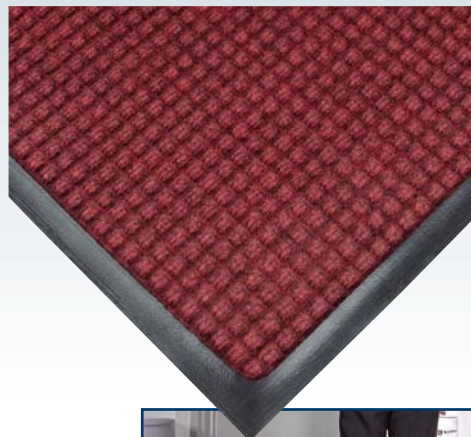
Flammability: "A" Rating of DOC FF1-70

Warranty: 3 years

Colour: Bluestone, Charcoal, Dark Brown, Evergreen, Red/Black

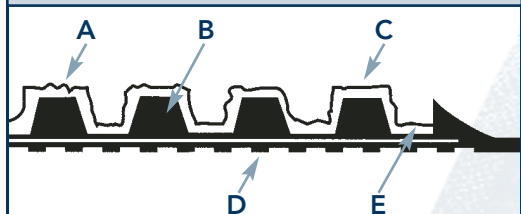
Stock Sizes:

600mm x 900mm	1800mm x 2400mm
900mm x 1500mm	1800mm x 3600mm
900mm x 3000mm	1800mm x 6000mm
1200mm x 1800mm	Per metre cut to length x 1200mm wide
1200mm x 2400mm	Per metre cut to length x 1800mm wide
1200mm x 6000mm	



C Custom widths and unique configurations are available. Please call for a quotation.

Construction



Face: Moulded reinforced textile

Compound: Solution-dyed Polypropylene

Pile Height: 10mm

Face Weight: 680g

Backing: SBR Rubber

Features & Benefits

- A:** Unique ridged construction effectively removes and traps dirt and moisture.
- B:** Exclusive rubber-reinforced face nubs prevent pile from crushing, extending product life.
- C:** Anti-static 100% premium polypropylene. Fabric dries quickly; won't fade or rot. Can easily be vacuumed or hosed out.
- D:** Special Tri-Grip™ cleated rubber backing minimises movement in most carpets and improves traction on hard surfaces.
- E:** Exclusive "water dam" allows Waterhog Classic mat to hold up to 6.7 litres per square metre, water and dirt stay in the mat. (Some styles available without dam for outside use, so water can drain easily.)



Bluestone

Charcoal

Dark Brown

Evergreen

Red/Black

Note: Colours subject to change from dye lot to dye lot.

Tested by CSIRO. The test results are available upon request. Wet Pendulum Test/Dry Floor Friction Test - AS/NZS4586:1999

ANTI-FATIGUE & SAFETY <
from the ground up

NOTES

NOTES